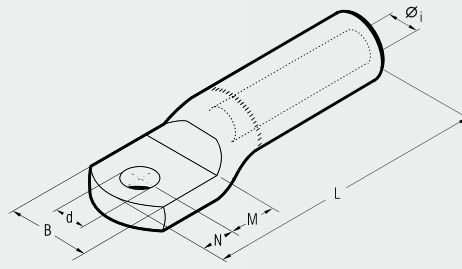


ALUMINIUM TERMINALS

AA-M



AA-M series terminals are made from aluminium of a purity equal to or greater than 99,5%.

They are designed to accept a variety of conductor forms especially low stranded compacted conductors.

Non circular conductors may require pre-rounding prior to introduction to the terminal.

Barrels are capped and filled with grease so as to avoid oxidation of the aluminium.

Details of the appropriate crimping tools and dies are shown on page 191.

Conductor Size sqmm	Ø Stud mm	Ref.	Dimensions mm						Quantity Box/Bag	Hydraulic Tools	
			Øi	B	M	N	L	d			
16	8	AA 16-M 8	5,5	21	13	11	77,0	8,4	60/3	HT 131-JUC RHU 131-C B 131-JUC	
25	8	AA 25-M 8	6,5	21	13	11	77,0	8,4	60/3		
35	8	AA 35-M 8	8,0	23	13	11	77,5	8,4	60/3		
	10	AA 35-M 10	8,0	23	13	11	77,5	10,5	60/3		
50	12	AA 50-M 12	9,0	26	16	14	91	13,2	60/3		
	14	AA 50-M 14	9,0	26	18	16	95	15,0	60/3		
70	12	AA 70-M 12	11,0	27	16	14	91	13,2	45/3		
	14	AA 70-M 14	11,0	27	18	16	95	15,0	45/3		
95	12	AA 95-M 12	12,5	27	16	14	91	13,2	45/3		
	14	AA 95-M 14	12,5	27	18	16	95	15,0	45/3		
120	12	AA 120-M 12	13,7	35	16	14	115	13,2	30/3		
	14	AA 120-M 14	13,7	35	18	16	119	15,0	30/3		
150	12	AA 150-M 12	15,5	34	16	14	115	13,2	30/3		
	14	AA 150-M 14	15,5	34	18	16	119	15,0	30/3		
185	12	AA 185-M 12	17,0	42	20	14	122	13,2	18/3		
	14	AA 185-M 14	17,0	42	22	16	126	15,0	18/3		
240	12	AA 240-M 12	19,5	44	20	14	122	13,2	15/3		
	14	AA 240-M 14	19,5	44	22	16	126	15,0	15/3		
300	12	AA 300-34 M 12	22,5	47	22	14	130	13,2	15/3	HT120 HT131-C RHC 131	ECW-H3D
	14	AA 300-34 M 14	22,5	47	22	16	132	15,0	15/3		
	16	AA 300-34 M 16	22,5	47	22	17	133	17,0	15/3		
400	16	AA 400-M 16	23,3	49	19	17	172	17,0	12/3	RHU 230-630	
500	16	AA 500-40 M 16	29,1	57	22	19	177	17,0	12/3		
630	16	AA 630-M 16	32,5	70	22	19	177	17,0	9/3		

