



**Insulated solderless terminals, copper, 10 - 150 mm<sup>2</sup>**

- For conductors, e.g. to VDE 0295 Class 2, 5 and 6
- Is directly crimped with the insulation

**Characteristics**

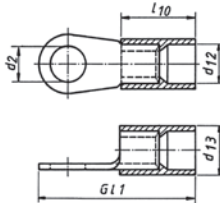
- Insulating sleeve PA, free of halide with easy-entry cable insertion
- Dimensions in tube according to DIN 46234
- With grooved profile for improved contact characteristics
- hard soldered in crimping area

**Material**

- Cu-ETP

**Surface**

- tin plated



Nominal cross section mm <sup>2</sup>	Part No.	Colour	Dimension mm					weight		pcs.
			d13	d2	d12	G11	l10	100 pcs. ~ kg Cu	kg Total	
10	6525	■	8.6	5.3	6.7	34.0	19.0	0.27	0.27	100
	6526	■	8.6	6.5	6.7	34.0	19.0	0.24	0.28	100
	6528	■	8.6	8.4	6.7	37.5	19.0	0.29	0.33	100
	65210	■	8.6	10.5	6.7	41.5	19.0	0.34	0.38	100
	65212	■	8.6	13.0	6.7	45.5	19.0	0.42	0.46	100
16	6535	■	9.6	5.3	7.7	39.5	20.5	0.39	0.44	100
	6536	■	9.6	6.5	7.7	39.5	20.5	0.38	0.43	100
	6538	■	9.6	8.4	7.7	41.5	20.5	0.43	0.48	100
	65310	■	9.6	10.5	7.7	43.5	20.5	0.50	0.55	100
	65312	■	9.6	13.0	7.7	50.5	20.5	0.58	0.63	100
25	6545	■	13.0	5.3	11.0	40.0	20.0	0.75	0.84	50
	6546	■	13.0	6.5	11.0	42.5	20.0	0.69	0.78	50
	6548	■	13.0	8.4	11.0	43.0	20.0	0.75	0.84	50
	65410	■	13.0	10.5	11.0	45.0	20.0	0.80	0.89	50
	65412	■	13.0	13.0	11.0	51.0	20.0	0.92	1.00	50
	65416	■	13.0	17.0	11.0	59.0	20.0	1.32	1.40	50
35	6556	■	15.0	6.5	12.7	44.0	22.5	1.01	1.14	50
	6558	■	15.0	8.4	12.7	44.5	22.5	0.98	1.10	50
	65510	■	15.0	10.5	12.7	46.5	22.5	1.00	1.12	50
	65512	■	15.0	13.0	12.7	52.5	22.5	1.26	1.38	50
	65516	■	15.0	17.0	12.7	54.5	22.5	1.55	1.67	50
50	6566	■	18.0	6.5	15.4	54.5	27.5	1.65	1.90	50
	6568	■	18.0	8.4	15.4	60.5	27.5	1.65	1.90	50
	65610	■	18.0	10.5	15.4	60.5	27.5	1.60	1.85	50
	65612	■	18.0	13.0	15.4	60.5	27.5	1.80	2.05	50
	65616	■	18.0	17.0	15.4	67.5	27.5	2.10	2.35	50
70	6576	■	20.0	6.5	17.4	61.5	30.5	2.60	2.90	50
	6578	■	20.0	8.4	17.4	61.5	30.5	2.50	2.80	50
	65710	■	20.0	10.5	17.4	66.5	30.5	2.50	2.80	50
	65712	■	20.0	13.0	17.4	66.5	30.5	2.40	2.70	50
	65716	■	20.0	17.0	17.4	70.5	30.5	2.70	3.00	50
95	65810	■	23.5	10.5	20.5	70.0	34.0	4.10	4.50	25
	65812	■	23.5	13.0	20.5	70.0	34.0	3.90	4.40	25
	65816	■	23.5	17.0	20.5	76.0	34.0	4.10	4.50	25
120	65910	■	26.7	10.5	23.5	79.0	36.0	5.60	6.10	25
	65912	■	26.7	13.0	23.5	82.0	36.0	5.40	5.90	25
	65916	■	26.7	17.0	23.5	90.0	36.0	5.80	6.30	25

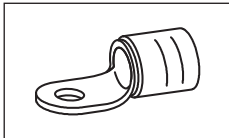
Terminals, connectors and pin terminals to DIN - Cu

■ **Insulated solderless terminals,  
copper, 10 - 150 mm<sup>2</sup>**

Nominal cross section mm <sup>2</sup>	Part No.	Colour	Dimension mm					weight		pcs.
			d13	d2	d12	G11	l10	100 pcs. ~ kg Cu	Total	
150	<b>66010</b>	■	29.2	10.5	26.0	80.0	39.0	7.60	8.40	25
	<b>66012</b>	■	29.2	13.0	26.0	83.0	39.0	7.60	8.40	25
	<b>66016</b>	■	29.2	17.0	26.0	83.0	39.0	7.50	8.30	25



[www.cablectrix.com](http://www.cablectrix.com) tel:01327 876769



■ **Tool application chart**

**Insulated solderless terminals**  
**Insulated pin terminals**

Crimping range corresponds to nominal cross-section mm <sup>2</sup>	Crimping tools		Tool type						Crimp profile	Page (Tool)
	Tools	Crimping head/ Adapter	Mechanical crimping tools	mechanical, electrical, pneumatic, crimping tools with interchangeable dies/heads	hand hydraulic crimping tools	Battery powered crimping tools	Hydraulic crimping systems	Hydraulic crimping heads		
10-16	K16		•						○	226
	K50			•					○	245
	EK1550					•			○	294
	EK1550G					•			○	296
	EK354						•		☾	300
10-50	K18			•					☾	248
	HK6018				•				☾	270
	EK5018L					•			☾	304
	PK18							•	☾	336
	THK18						•		☾	336
	HK60UNV + UA18				•				☾	286
	EK60UNVL + UA18					•			☾	330
	PK60UNV + UA18							•	☾	354
10-70	K22			•					☾	250
	HK6022				•				☾	272
	EK6022L					•			☾	306
	PK22							•	☾	338
	THK22						•		☾	338
	HK60UNV + UA22				•				☾	286
	EK60UNVL + UA22					•			☾	330
	PK60UNV + UA22							•	☾	354
10-95	HK12025				•				☾	276
	HK12042				•				☾	278
	HK120U				•				☾	280
	EK12025L					•			☾	312
	EK12042L					•			☾	314
	EK120UL					•			☾	316
	PK12042							•	☾	342
	PK120U							•	☾	344
10-150	HK252						•		☾	364
	HK252EL220						•		☾	367
	PK252							•	☾	346