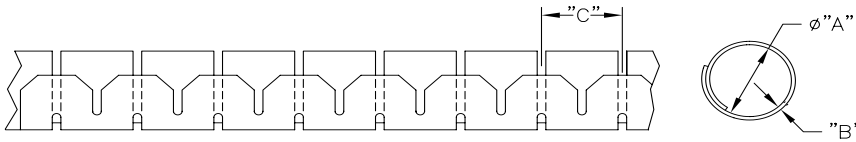




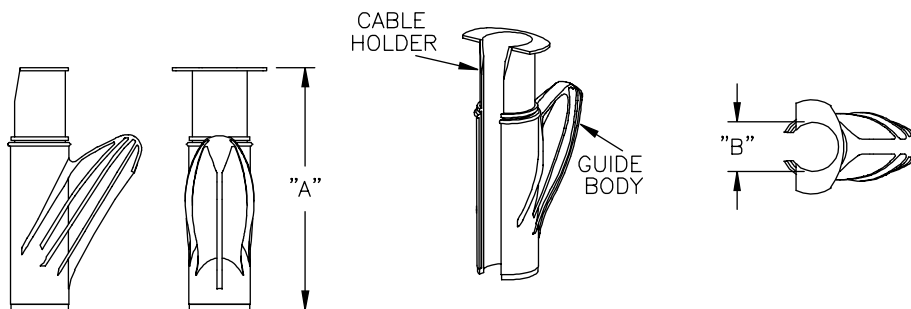
• UL #E208749

Slit Harness Wrap with Installation Tool



Part No.	"A" Ref.	Max. Bundle Ø	"B" Ref.	"C" Ref.	Standard Lengths	Material	Color	Installation Tool Part No.
SHR-05-6NB	5	6	0.8	10	100m	Nylon, RMS-85	Black	CAT-05-PP
SHR-08-6NB	8	10	0.8	10	100m			CAT-08-PP
SHR-15-6NB	15	16	0.8	14	50m			CAT-15-PP
SHR-20-6NB	20	23	0.9	17	30m			CAT-20-PP
SHR-25-6NB	25	25	1	20	20m			CAT-25-PP
SHR-32-6NB	32	32	1.3	24.9	15m	CAT-32-PP		
SHR-05-6V0B	5	6	0.8	10	100m	UL94 V0 Nylon, RMS-95		CAT-05-PP
SHR-08-6V0B	8	10	0.8	10	100m			CAT-08-PP
SHR-15-6V0B	15	16	0.8	14	50m			CAT-15-PP
SHR-20-6V0B	20	23	0.9	17	30m			CAT-20-PP
SHR-25-6V0B	25	25	1	20	20m		CAT-25-PP	
SHR-32-6V0B	32	32	1.3	24.9	15m	CAT-32-PP		
SHR-05-PPB	5	6	0.8	10	100m	Polypropylene, RMS-94	CAT-05-PP	
SHR-08-PPB	8	10	0.8	10	100m		CAT-08-PP	
SHR-15-PPB	15	16	0.8	14	50m		CAT-15-PP	
SHR-20-PPB	20	23	0.9	17	30m		CAT-20-PP	
SHR-25-PPB	25	25	1	20	20m		CAT-25-PP	
SHR-32-PPB	32	32	1.3	24.9	15m		CAT-32-PP	
NEW SHR-08-PPW	8	10	0.8	10	100m		White	CAT-08-PP
NEW SHR-15-PPW	15	16	0.8	14	50m			CAT-15-PP
NEW SHR-20-PPW	20	23	0.9	17	30m			CAT-20-PP
NEW SHR-25-PPW	25	25	1	20	20m			CAT-25-PP
NEW SHR-32-PPW	32	32	1.3	24.9	15m	CAT-32-PP		
NEW SHR-15-PPS-9022	15	16	0.8	14	50m	Silver	CAT-15-PP	
NEW SHR-20-PPS-9022	20	23	0.9	17	30m		CAT-20-PP	
NEW SHR-25-PPS-9022	25	25	1	20	20m		CAT-25-PP	
NEW SHR-32-PPS-9022	32	32	1.3	24.9	15m		CAT-32-PP	

Installation Tool Sold Separately



CAT Installation Tool



Standard Package: 1						
Part No.	"A" Ref	"B" Max Bundle Ø	To Be Used With	Color	Material	Style
CAT-05-PP-BL	53	6	SHR-05-YYY*	Blue	Polypropylene, RMS-150	See Richco Website
CAT-08-PP	71	9.5	SHR-08-YYY*	Body: Orange Holder: White	Guide Body: Polypropylene, RMS-268; Holder: Polyacetal, RMS-267	Shown
CAT-15-PP	81	16	SHR-15-YYY*			
CAT-20-PP	100	20	SHR-20-YYY*			
CAT-25-PP	113	24.5	SHR-25-YYY*			
CAT-32-PP	144	31	SHR-32-YYY*			
Tool available in bulk packages of 100/box. To order add -BU to the end of the part no.						
*YYY = SHR Material						