



” *Greenlee processing tools make your workshop mobile. This makes you much more flexible and efficient in plant and control cabinet construction.*“

Friedrich Reusch

Special cutting tools	584
Machining tools for bus bars	589
Pumps and pump accessories	592



On-site processing

and installation.

Tools and systems for plant and control cabinet construction.

Plant and control cabinet construction requires not only tools for cable assembly and connection, but numerous additional tools as well. That's why the Greenlee range offers tools such as the bus bar tool centre for cutting, punching and stepping bus bars, which would otherwise not be possible on site.

High quality, transportable profile rail cutters, punching tools and wiring duct cutters also permit fast on-site operations.



- **Bus Bar Tool Centre for stationary and portable operations.**
- **Wiring duct cutters for plastic ducts.**
- **Appliances for processing DIN profile rails.**
- **Various drive units.**

■ Bus bars for on-site operations.

- ▶ One compact tool for bending, cutting, punching and offsetting copper bus bars up to 120 mm x 12 mm.
- ▶ Compact design and low weight.
- ▶ Easy handling and change of tools.



Benefits:

- ▶ One tool for all bus bar operations, **all operations can be completed quickly everywhere.**
- ▶ Suitable for solid and laminated bus bars.
- ▶ All working operations can easily be completed with just one tool with a push of a button.



- ▶ More on Page 589.

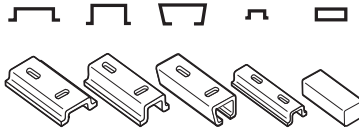


■ Easy cutting and punching of *DIN profile rails*.

- ▶ For all standard DIN profile rails.
- ▶ 5 profiles in standard range.

Benefits:

- ▶ All standard DIN profile rails can be processed on site.
- ▶ Even the standard range offers a host of options.



■ Fast and clean cutting of *wiring ducts*.

- ▶ Wiring duct cutter for plastic channels up to 125 mm wide and 2.5 mm thick.
- ▶ Burr-free cutting.
- ▶ 90° angle cutting.

Benefits:

- ▶ Wiring ducts can be cut anywhere with this tool.
- ▶ Maximum precision during cutting prevents mistakes and defects.
- ▶ Wiring ducts can be precisely cut with just a few operations.



- ▶ More on Page 588.

PVC pipe cutter



Characteristics

- Ratchet version

Technical data		
Cutting range	to 32 mm	
Item	Part No.	
PVC pipe cutter	50042530	
Accessories		Page
Replacement blade	50003550	

DIN rail cutting and punching tool



- ▶ For burr-free cutting and punching
- ▶ Less force needed
- ▶ Includes die plate holder with 5 profiles

Suitable for

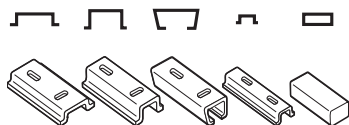
- Punches vertical and horizontal mounting holes 6.4 x 12.0 mm
- With holes for workbench assembly

Item	Part No.	
DIN rail cutting and punching tool	50115413	
Scope of supply	Part No.	Page
Hand lever	50115421	
Length stop 1 m	50115430	
Cutting die set	50115448	
Centering mask	50115456	
Fixing device	50115537	

Accessories	Part No.	Page
Special-cut plate upon request		
Special cutting die set incl. centering mask upon request		



A - 35.0 mm	A - 35.0 mm	A - 34.0 mm	A - 15.0 mm	A - 10.0 mm
B - 27.0 mm	B - 27.0 mm		B - 10.5 mm	
C - 7.5 mm	C - 15.0 mm	C - 15.0 mm	C - 5.5 mm	C - 3.0 mm
D - 1.0 mm	D - 1.5 mm		D - 1.0 mm	



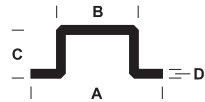
DIN rail cutting tool Compact

- ▶ For burr-free cutting
- ▶ Less force needed
- ▶ Includes cutting die set with 2 profiles

Suitable for

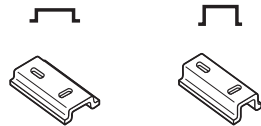
- With holes for workbench assembly
- Manual operation

Item	Length of rail guide mm	Length of hand lever mm	Part No.
DIN rail cutting tool Compact	1000	850	52055684



A - 35,0 mm
B - 27,0 mm
C - 7,5 mm
D - 1,0 mm

A - 35,0 mm
B - 27,0 mm
C - 15,0 mm
D - 1,5 mm



Wiring conduit cutter



- ▶ Burr-free cutting
- ▶ 90° angle cutting
- ▶ Less effort

Characteristics

- Standard plastic profile with 2.5 mm wall thickness and up to 125 mm width
- Blade easily replaceable
- Maintenance free

Technical data		
Cutting width	125 mm	
Dimension	285 x 280 x 290 mm	
Weight	10.5 kg	
Length of rail guide	1000 mm	
Length of hand lever	500 mm	
Wiring duct (wall thickness)	2.5 mm	
Item	Part No.	
Wiring conduit cutter	50125699	
Scope of supply	Part No.	Page
Hand lever		
Length stop		
Measurement scale		
Stainless steel support plate		
Accessories	Part No.	Page
Replacement blade for wiring conduit cutter	52047028	

Bus bar tool centre

- ▶ Basic tool for bending, punching and cutting solid and laminated bus bars up to 120 x 12 mm
- ▶ Compact design and low weight

Suitable for

- Operation with EHP4 or AHP700-L

Order info

- For operation with EHP4 the adaptor CMGSK and additional Part No. „EHP4“ required (50052241EHP4). For operation with AHP700-L the adaptor CMGSK and plug Sb24 required.



Technical data	
Crimping force	185 kN
Max. operating pressure	700 bar
Capacity	1.5 l / min.
Required oil volume	0.15 l
Dimension	480 x 500 x 360 mm
Weight	51 kg
Item	Part No.
Bus bar tool centre for operation with AHP700L	50052241

Bending tool

- ▶ For Al/Cu material to max. 120 x 12 mm
- ▶ Bending radius 5.0 mm

Characteristics

- max. bending angle 100°



Technical data	
Weight	7.1 kg
Item	Part No.
Bending tool, 5.0 mm bending radius	50052250

Punching tool I
Characteristics

- For Al/Cu solid bars up to max. 12 mm and steel up to 10 mm thickness

Suitable for

- Hole diameters from 6.5 - 21 mm



Technical data	
Weight	4.5 kg
Item	Part No.
Punching tool I	50052128

Machining tools for bus bars

Punch and die holder for punching tool I

Characteristics

- Al/Cu solid bars up to max. 12 mm and steel up to 10 mm material thickness



Item	Part No.
Punch and die Ø 6.5 mm	50052276
Punch and die Ø 8.5 mm	50052284
Punch and die Ø 11 mm	50052292
Punch and die Ø 13 mm	50052306
Punch and die Ø 15 mm	50052314
Punch and die Ø 17 mm	50052322
Punch and die Ø 21 mm	50052330
Oblong punch and die 6.5 x 13 mm	50052349
Oblong punch and die 8.5 x 16 mm	50052357
Oblong punch and die 11.0 x 20 mm	50052365
Oblong punch and die 13.0 x 20 mm	50052373
Oblong punch and die 17.0 x 20 mm	50052381

Punching tool III



Characteristics

- Solid and laminated bus bars from Al/Cu up to max. 12 mm and steel up to 10 mm thick

Suitable for

- Hole diameters from 6.5 - 21 mm

Technical data	
Weight	4.5 kg
Item	Part No.
Punching tool III	50766919

Punch and die holder for punching tool III



Characteristics

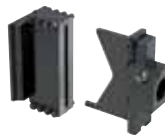
- Al/Cu solid and laminated bus bars up to max. 12 mm and steel up to 10 mm material thickness

Item	Part No.
Punch and die Ø 6.5 mm	50115286
Punch and die Ø 8.5 mm	50115294
Punch and die Ø 11 mm	50115308
Punch and die Ø 13 mm	50115316
Punch and die Ø 15 mm	50115324
Punch and die Ø 17 mm	50115332
Punch and die Ø 21 mm	50115340
Oblong punch and die 6.5 x 13 mm	50115359
Oblong punch and die 8.5 x 16 mm	50115367
Oblong punch and die 11 x 20 mm	50115375
Oblong punch and die 13 x 20 mm	50115383
Oblong punch and die 17 x 20 mm	50115391

Cutting tool
Characteristics

- For Al/Cu material up to max. 120 x 12 mm

Technical data	
Weight	5.3 kg
Item	Part No.
Cutting tool	50052144


Offset tool
Characteristics

- Workpiece offset 5, 6, 8, 10 and 12 mm by using insertion plates
- For Al/Cu material up to max. 120 x 12 mm

Technical data	
Dimension	175 x 90 x 135 mm
Weight	10.0 kg
Item	Part No.
Offset tool	50052152


Accessory box made of aluminum for punching tools, empty
Suitable for

- Storage of accessories

Technical data	
Dimension	350 x 250 x 200 mm
Weight	4.3 kg
Item	Part No.
Accessory box made of aluminum for punching tools, empty	50052160



767 Hydraulic hand pump



► Lightweight, portable hand pump

Characteristics

- In combination with punch cylinder 50170910 for all hole sizes
- Versatile operation - works in every position
- Incl. mounting holes for work bench assembly

Technical data		
Dimension	330 x 100 x 100 mm	
Operating pressure	max. 460 bar	
Weight	2.7 kg	
Item	Part No.	
Hydraulic hand pump 767	50132849	
Accessories	Part No.	Page
Hydraulic hose 6.4 mm x 0.9 m	50383167	

1725 Hydraulic foot pump



► Foot operation ensures two-handed operation of round and special shaped punches

Characteristics

- Lockable pedal for storage and transport
- In combination with punch cylinder 50170910 for all hole sizes
- Versatile operation

Technical data		
Dimension	400 x 200 x 150 mm	
Operating pressure	max. 460 bar	
Weight	5.0 kg	
Item	Part No.	
Hydraulic foot pump 1725	50135333	
Accessories	Part No.	Page
Hydraulic hose 6.4 mm x 3 m	50377299	

755 High-pressure hydraulic hand pump



► Powerful, portable hand pump

Characteristics

- In combination with punch cylinder 50170910 for all hole sizes
- Mounting holes for work bench assembly
- Works in every position
- Incl. 9.5 mm quick coupling with dust cap

Technical data		
Dimension	650 x 180 x 150 mm	
Operating pressure	max. 700 bar	
Weight	8.0 kg	
Item	Part No.	
High-pressure hydraulic hand pump 755	50156772	
Accessories	Part No.	Page
Hydraulic hose 9.5 mm x 1.80 m	50112899	

Hydraulic hose 6.4 mm x 3 m

Characteristics

- For use with hydraulic foot pump 1725
- Filled with hydraulic oil

Item	Part No.	
Hydraulic hose 6.4 mm x 3 m	50377299	
Scope of supply	Part No.	Page
Hydraulic hose, 3.0 m	90525159	
Coupler plug	90541693	
Dust cap	90541707	



Hydraulic hose 9.5 mm x 1.80 m

Characteristics

- For use with pump 755
- Filled with hydraulic oil

Item	Part No.	
Hydraulic hose 9.5 mm x 1.80 m	50112899	
Scope of supply	Part No.	Page
Hydraulic hose, 1.8 m	90507606	
Quick action coupling	90508238	
Dust cap	90541707	



Hydraulic hose 6.4 mm x 0.9 m

Characteristics

- For use with hydraulic hand pump 767
- Without hydraulic oil

Item	Part No.	
Hydraulic hose 6.4 mm x 0.9 m	50383167	
Scope of supply	Part No.	Page
Hydraulic hose, 0.9 m	50063022	
Coupler plug	90541693	
Dust cap	90541707	



Hydraulic oil

Characteristics

- Specially-developed for GREENLEE hydraulic tools

Item	Part No.
Hydraulic oil 3.8 l	90510593
Hydraulic oil 0.95 l	90508068

