

RFP Ribbon Cable Split Cores

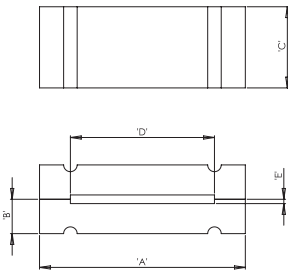


Fig. 1

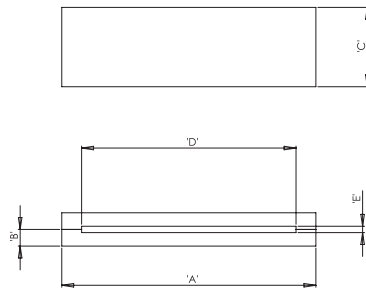
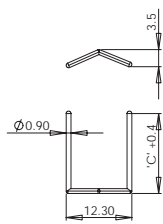
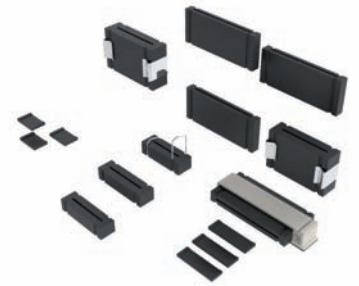
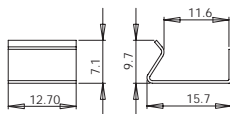


Fig. 2



Spring



Metal Clamp

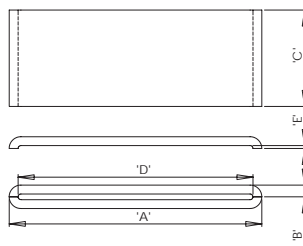


Fig. 3

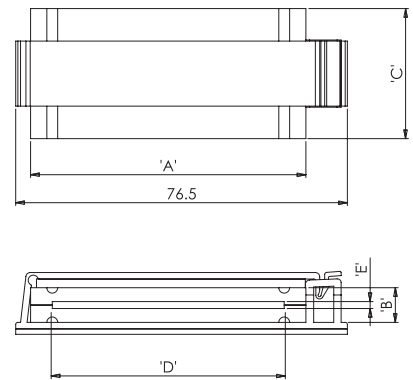


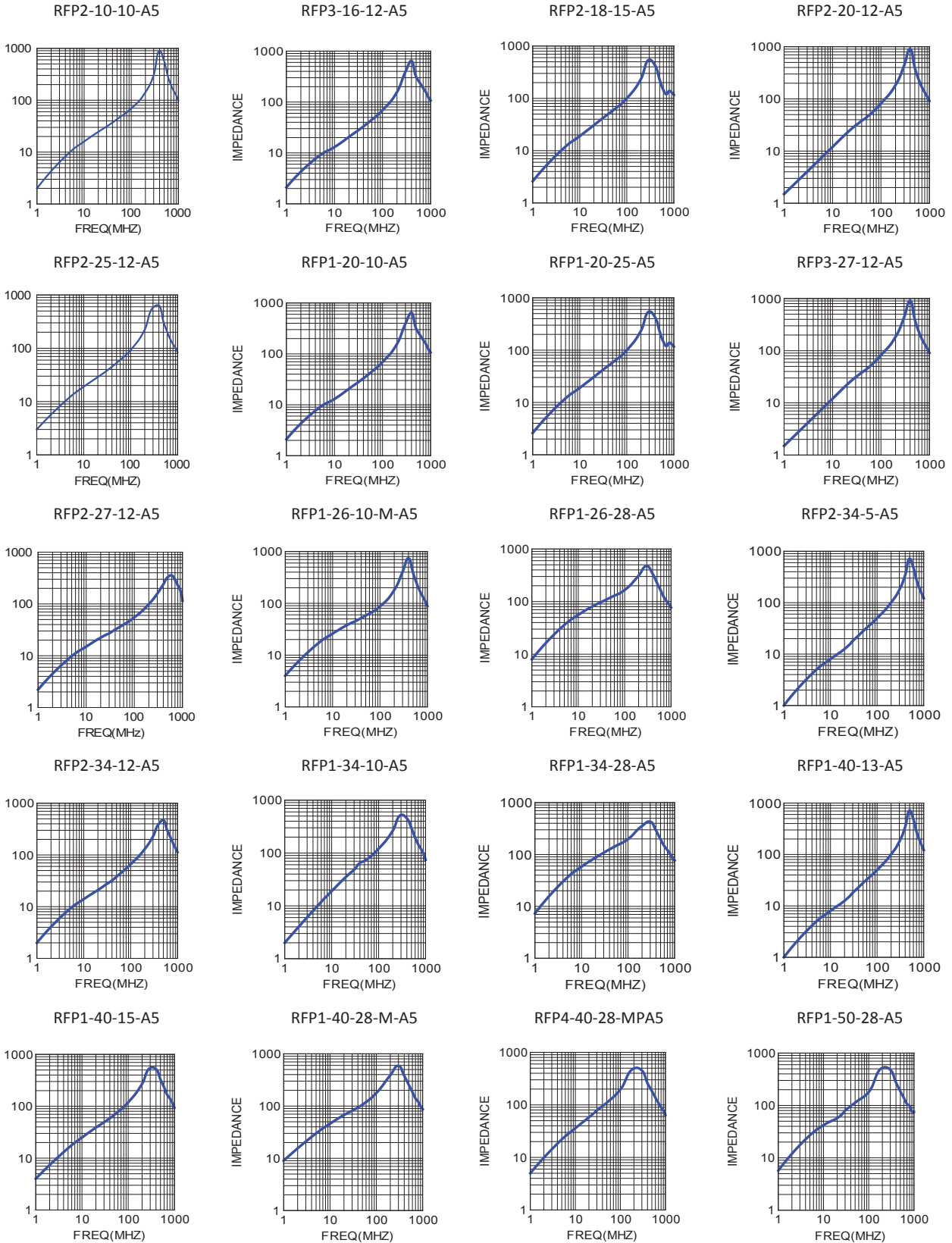
Fig. 4
with Adhesive Base

Ferrite Material: A5 RMS-303 • Casing Material: Nylon 6/6. RMS-244 • Metal Clamp & Spring: RMS-305

Part No.	Fig	Metal clip or spring	A	B	C	D	E	Impedance (Ω)		Standard Pack (Pieces)
								25MHz	100MHz	
RFP2-10-10-A5	2	-	16.5	2	10.25	12.5	0.6	27	69	240
RFP3-16-12-A5	2	-	25	2.8	12	21	1.1	28	90	144
RFP2-18-15-A5	3	-	28.5	2.25	15	23.5	0.42	36	99	385
RFP2-20-12-A5	2	-	32	2.1	12	27	0.4	30	87	315
RFP2-25-12-A5	2	-	37.1	3.3	12.7	32	0.9	36	106	66
RFP1-20-10-A5	1	SPRING	38	6.35	10	26.6	0.8	45	107	60
RFP1-20-25-A5	1	METAL CLIP	38	6.35	25.4	26.6	0.8	105	175	15
RFP3-27-12-A5	3	-	40	2	12	35	0.5	16	73	72
RFP2-27-12-A5	2	-	40	3.25	12	35	0.55	27	66	72
RFP1-26-10-M-A5	1	SPRING	45	6.35	10	34.4	0.8	43	110	60
RFP1-26-28-A5	1	METAL CLIP	45	6.35	28.5	34.4	0.8	102	189	15
RFP2-34-5-A5	3	-	49.6	3.25	5	44	0.55	15	50	162
RFP2-34-12-A5	3	-	49.6	3.25	12	44	0.55	23	70	0
RFP1-34-10-A5	1	SPRING	55.1	6.35	10	43.7	0.8	36	104	40
RFP1-34-28-A5	1	METAL CLIP	55.1	6.35	28.5	43.7	0.8	80	181	10
RFP1-40-13-A5	1	SPRING	63.5	6.35	13	52	1.1	45	114	20
RFP1-40-15-A5	1	SPRING	63.5	6.35	15	52	0.8	50	124	20
RFP1-40-28-M-A5	1	METAL CLIP	63.5	6.35	28.5	52	0.8	77	172	10
RFP4-40-28-MPA5	4	PLASTIC with adhesive base	63.5	12.7	28.5	52	1.6	77	172	16
RFP1-50-28-A5	1	METAL CLIP	76.2	6.35	28.5	65.3	0.85	70	200	10

Standard Pack sizes may vary

EMI SUPPRESSION FERRITE CORES



L

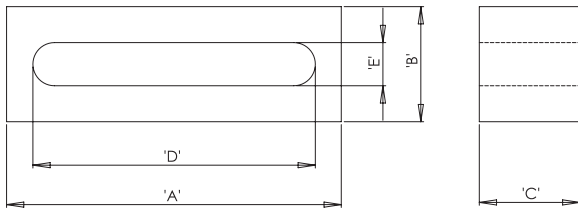


Fig. 1

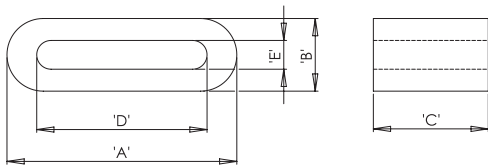


Fig. 2

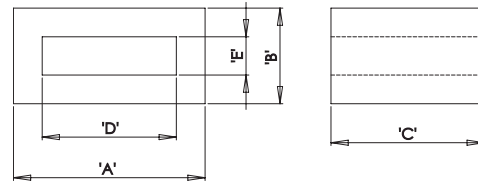


Fig. 3

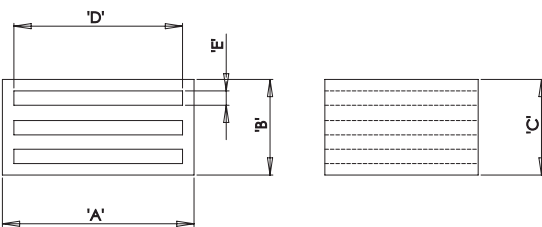


Fig. 4

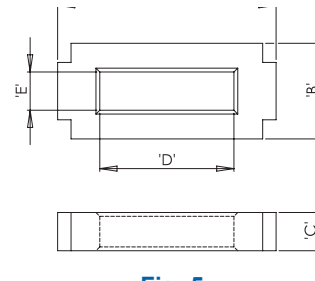


Fig. 5

Part No.	Fig	A	B	C	D	E	Impedance (Ω)		Standard Pack (Pieces)	Ferrite Material
							25MHz	100MHz		
RFS3-2-9-K5B	3	5	3	9	3	1	46	74	1000	K5B RMS-303
RFS3-3-9-K5B	3	5.5	3	9	4	1.4	32	57	1000	
RFS2-3-9-K5B	3	6.5	3.8	9	4	1.4	41	72	500	
RFS3-4-9-A5	3	7.5	5.3	9	5	2.8	32	59	500	A5 RMS-303
RFS3-4-12-A5	3	7.5	5.3	12	5	2.8	42	86	500	
RFS2-5-8-A5	3	9.1	5.6	7.8	7.2	3.7	19	41	500	
RFS3-5-12-A5	3	9.5	3	12	7.6	0.8	38	79	500	
RFS3-6-3-A5	3	10	3.2	3	8	1	13	42	1000	
RFS3-6-7-A5	3	10	3.2	7	8	1	25	65	1000	
RFS1-6-8-A5	3	10	3.2	8	8	1	28	60	1000	
RFS5-7-2-A5	5	13.84	3.94	1.88	9.78	1.52	10	32	2000	
RFS2-8-12-A5	2	14.7	2.75	12	11	0.7	28	63	192	
RFS2-9-5-A5	2	16	3	5	11.5	0.5	14	40	375	
RFS2-9-8-3-A5	2	16	3	8	11.5	0.5	24	68	200	
RFS2-9-4-A5	2	16	4	4	11.5	0.5	15	40	450	
RFS2-9-6-A5	2	16	5	6	11.5	0.5	20	48	352	
RFS2-9-8-A5	2	16	5	8	11.5	0.5	29	72	288	
RFS2-9-12-A5	2	16	5	12	11.5	0.5	41	73	160	
RFS2-9-12-2-A5	2	16	5	12	11.5	1.2	37	69	160	
Standard Pack sizes may vary										

EMI SUPPRESSION FERRITE CORES

Ferrite Material: A5 RMS-303									
Part No.	Fig	A	B	C	D	E	Impedance (Ω)		Standard Pack (Pieces)
							25MHz	100MHz	
RFS2-9-15-A5	2	16	5	15	11.5	0.5	50	90	144
RFS2-9-20-A5	2	16	5	20	11.5	0.5	60	120	126
RFS2-11-10-A5	2	18	5	8	14	1	45	164	252
RFS2-11-20-A5	2	18.9	6.5	20	14	1.8	61	123	84
RFS2-11-12-A5	2	19	6.5	12	14	1.8	38	62	144
RFS2-13-15-A5	2	20.5	3.5	15	16.5	0.8	36	97	126
RFS1-15-7-2-A5	1	23.3	2.5	7	20	0.9	14	41	240
RFS1-15-7-A5	1	23.3	3	7	20	0.9	17	45	240
RFS1-15-10-A5	1	23.3	3	10	20	0.9	18	47	168
RFS1-15-12-A5	1	23.3	3	12	20	0.9	23	58	144
RFS1-15-15-A5	1	23.3	3	15	20	0.9	24	59	108
RFS1-14-15-A5	1	23.8	3.2	15	18.7	1.1	27	77	120
RFS2-14-7-A5	2	23.8	6.3	7	18.7	1.1	21	47	240
RFS2-14-13-A5	2	23.8	6.3	12.5	18.7	1.1	46	96	120
RFS2-2-30-A5	2	24	12	30	15	4	120	191	48
RFS2-15-12-A5	2	24.5	5	12	20	0.5	35	70	144
RFS2-15-20-A5	2	24.5	5	20	20	0.5	41	78	84
RFS2-17-20-A5	2	25	3.7	20	22	0.7	43	114	56
RFS2-16-12-A5	2	25.5	3	12	21.5	0.65	27	87	132
RFS1-16-15-A5	1	25.5	4.5	15	21.5	0.65	39	110	144
RFS1-17-15-A5	1	25.5	5	15	21.5	0.65	48	126	108
RFS2-18-8-A5	2	28.5	6.5	8	23.5	0.8	28	65	170
RFS2-18-15-A5	2	28.5	6.5	15	23.5	1	44	91	90
RFS2-18-18-A5	2	28.5	6.5	18	23.5	1	55	127	80
RFS2-18-10-A5	2	28.6	7.7	10	23.5	1.7	31	71	140
RFS2-22-8-A5	2	31	3	8	27	1	13	42	160
RFS2-22-12-A5	2	31	3	12	27	1	19	56	110
RFS2-22-20-A5	2	31	4	20	27	0.7	42	121	60
RFS2-22-9-A5	2	31	5	9	27	1	29	88	150
RFS2-20-12-A5	2	31	5	12	27	1	28	75	110
RFS2-21-18-A5	2	31	5	18	27	1	34	94	70
RFS2-21-25-A5	2	32	4	25	27	0.7	51	142	36
RFS2-22-25-A5	2	32	6	25	28	0.85	59	146	36
RFS4-21-16-A5	4	32	11.8	16	27	1	76	188	80
RFS2-21-8-A5	2	33.5	6.5	8	27	1.3	21	53	136
RFS2-21-10-A5	2	33.5	6.5	10	27	1.3	26	57	84
RFS2-21-12-A5	2	33.5	6.5	12	27	1.3	30	66	70
RFS2-21-15-A5	2	33.5	6.5	15	27	1.3	36	78	72
RFS2-21-20-A5	2	33.5	6.5	20	27	1.3	58	149	56
RFS2-24-18-A5	2	36	6.5	18	31	0.6	52	147	64
RFS2-24-8-A5	2	36	7.5	8	31	1	29	79	48
RFS2-24-20-A5	2	36	7.5	20	31	1	54	122	32
RFS2-24-30-A5	2	36	7.5	30	31	1	72	174	32
RFS2-24-36-A5	2	36	7.5	36	31	1	92	192	24
RFS2-25-12-A5	2	36	5	12	32.4	0.8	29	88	96
RFS2-26-12-A5	2	38.5	4	12	35	0.8	25	68	72
RFS2-26-15-A5	2	38.5	4	15	35	0.8	31	100	56
RFS1-20-25-A5	1	38.53	12.06	25.4	26.77	1.9	100	180	30
RFS2-27-6-A5	2	40	6.5	6	35	1.3	16	45	144
RFS2-27-8-A5	2	40	6.5	8	35	1.3	23	58	96
RFS2-27-10-A5	2	40	6.5	10	35	1.3	25	64	84
RFS2-27-12-A5	2	40	6.5	12	35	1.3	28	69	72
RFS2-27-12-2-A5	2	40	6.5	12	35	2	24	59	72
RFS2-27-15-A5	2	40	6.5	15	35	1.3	32	85	54
RFS2-27-18-A5	2	40	6.5	18	35	1.3	36	98	48
RFS2-27-20-A5	2	40	6.5	20	35	1.3	41	105	42
RFS3-4-5-A5	3	40	11.4	5	32	7.4	12	36	96
RFS1-27-18-A5	1	41	12.5	18	34.4	1.5	60	136	24
RFS3-27-18-A5	3	45	12.7	18	35	1.8	51	114	42

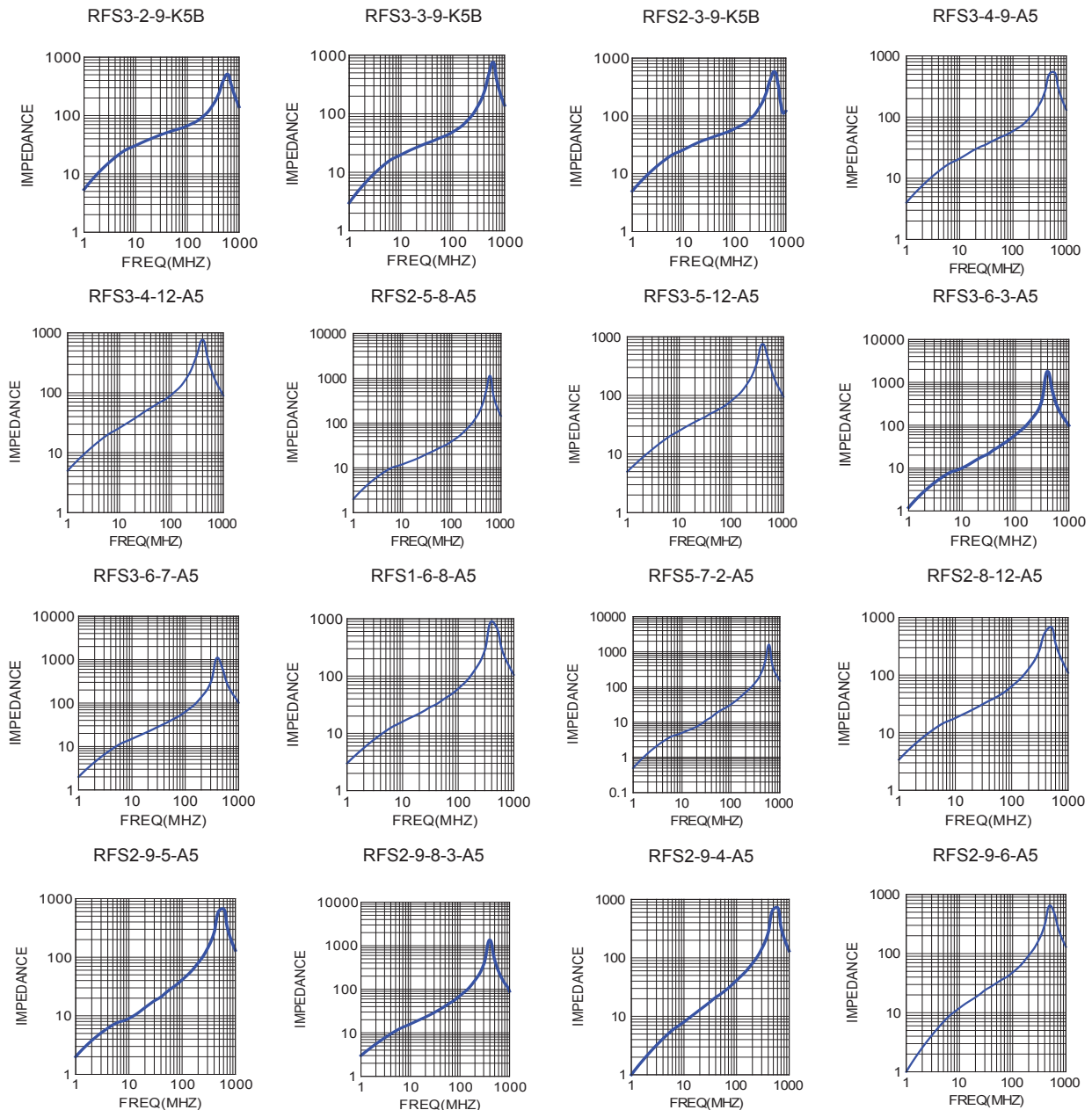
Standard Pack sizes may vary

EMI SUPPRESSION FERRITE CORES

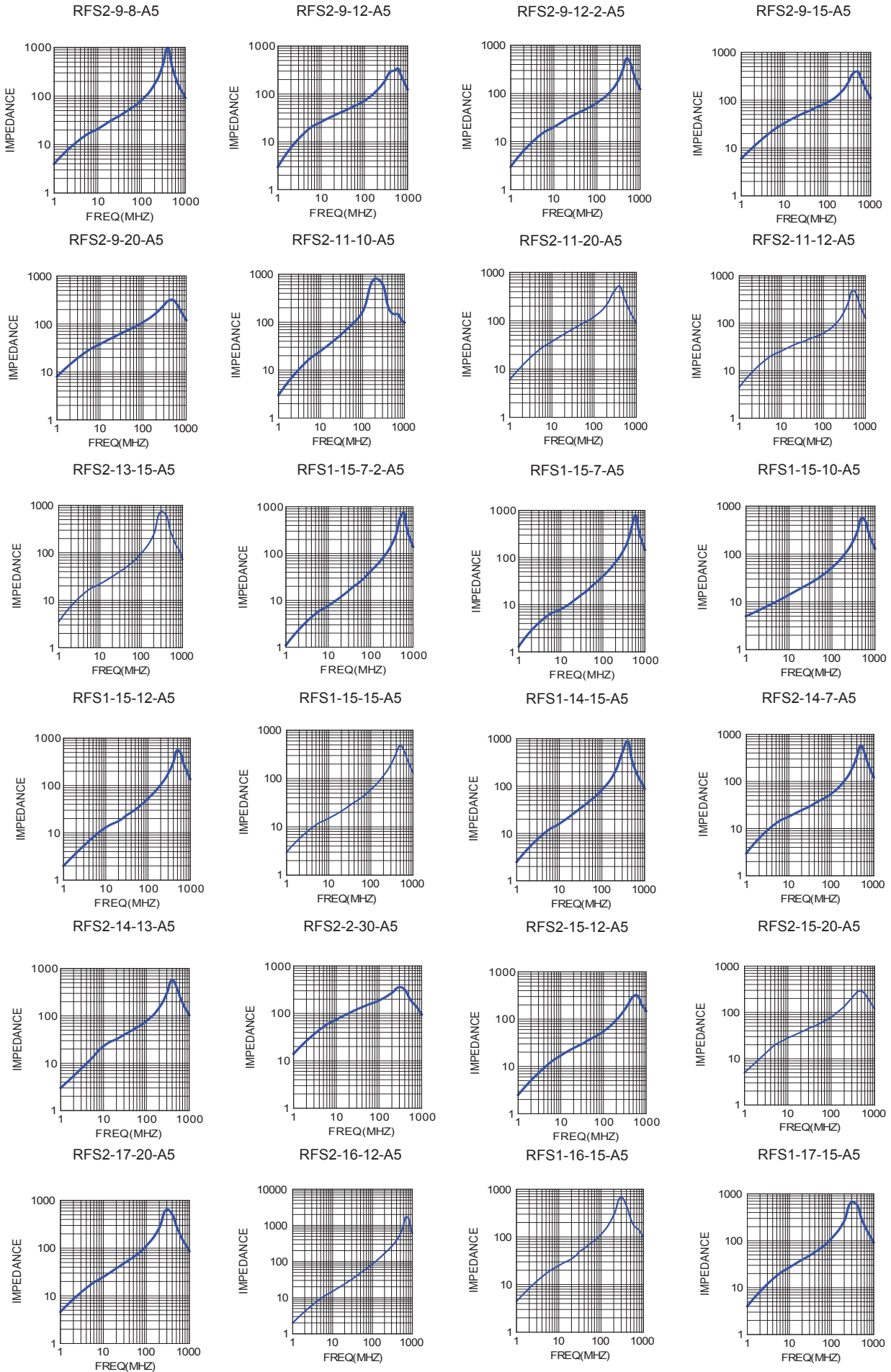
Ferrite Material: A5 RMS-303

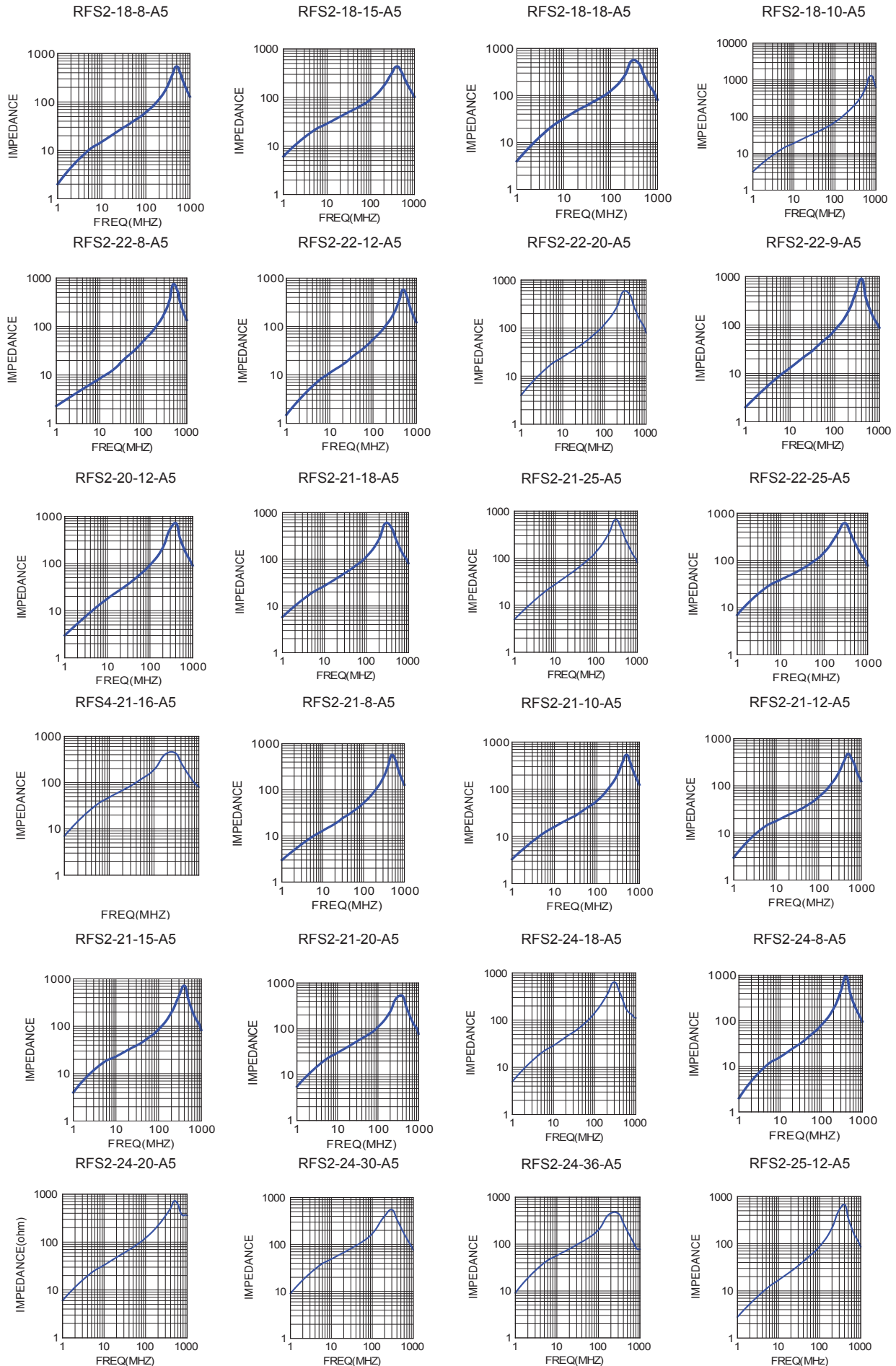
Part No.	Fig	A	B	C	D	E	Impedance (Ω)		Standard Pack (Pieces)
							25MHz	100MHz	
RFS3-27-10-A5	3	45	12.7	10	35	1.8	39	89	48
RFS1-27-28-A5	1	45.1	12.5	28.5	34.4	1.5	95	195	24
RFS2-30-12-A5	2	45.2	6.5	12	40	1.3	27	70	72
RFS2-30-15-A5	2	45.2	6.5	15	40	1.3	31	70	54
RFS2-34-8-A5	2	49.6	6.5	8	44	1.3	17	50	96
RFS2-34-12-A5	2	49.6	6.5	12	44	1.3	25	66	72
RFS2-34-15-A5	2	49.6	6.5	15	44	1.3	31	94	54
RFS2-34-12-2-A5	2	49.6	7	12	44	1.8	25	66	66
RFS2-35-12-A5	2	50	6.5	12	44.9	1.4	23	62	72
RFS2-40-12-A5	2	57.6	6.5	12	52	1.3	25	75	48
RFS2-40-20-A5	2	58.6	7.5	20	52	1.3	43	119	30
RFS1-38-13-A5	1	60	12	12.7	48.5	2.2	40	95	30
RFS2-43-12-A5	2	60.6	6.50	12	55.2	1.3	28	92	48

Standard Pack sizes may vary

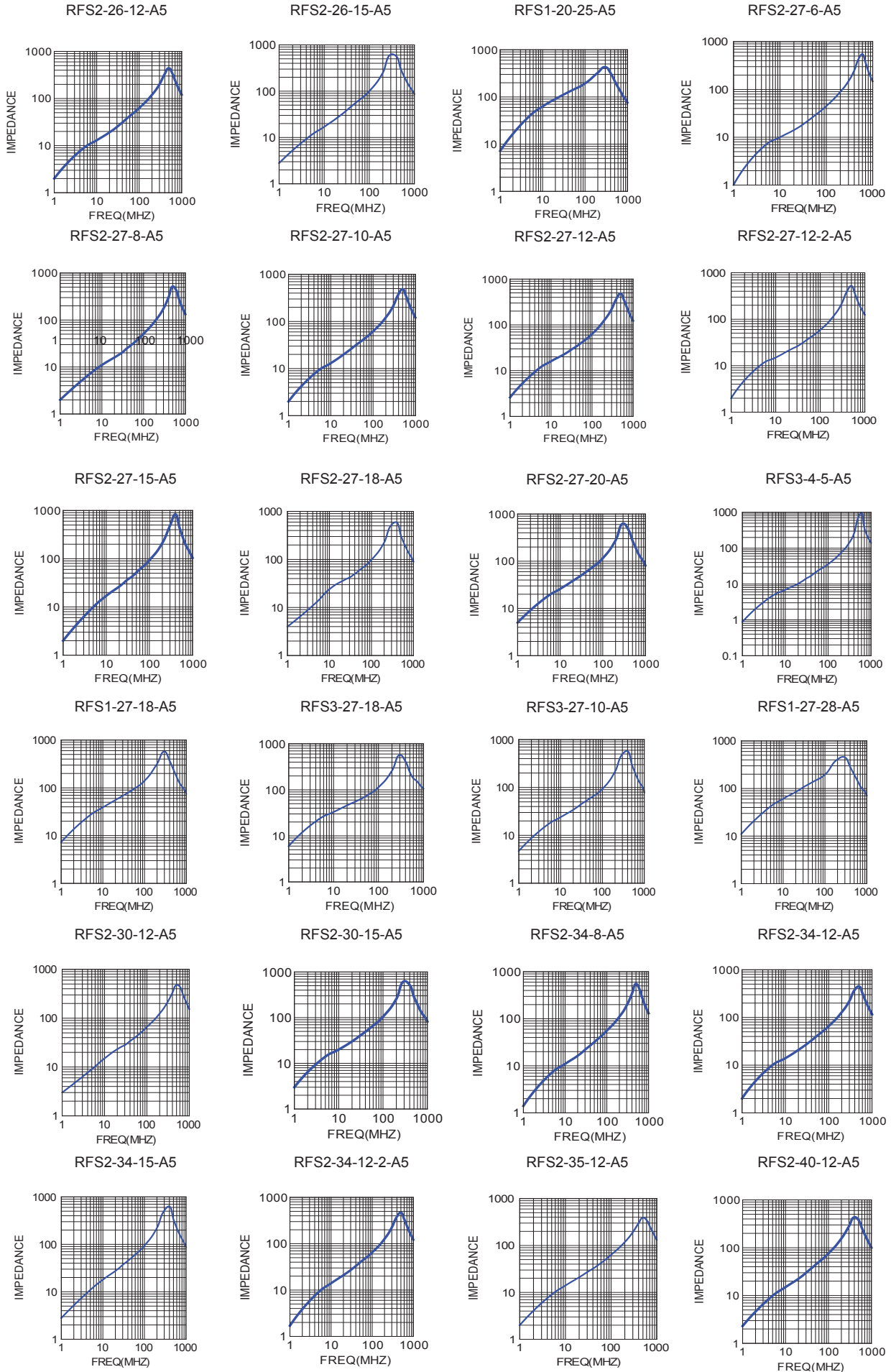


EMI SUPPRESSION FERRITE CORES



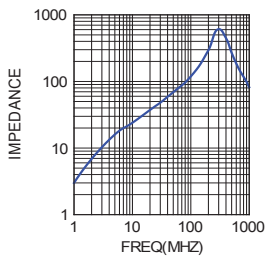


EMI SUPPRESSION FERRITE CORES

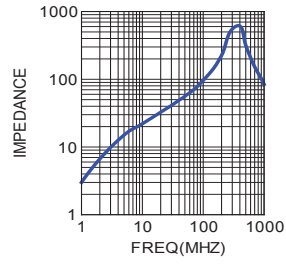


EMI SUPPRESSION FERRITE CORES

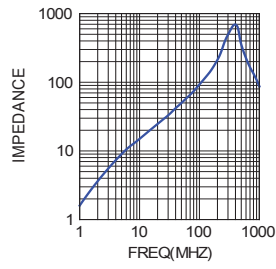
RFS2-40-20-A5



RFS1-38-13-A5



RFS2-43-12-A5



L